



Mobile@Wintec

Takumi Nakano

Toyota National College of Technology

John Clayton

Waikato Institute of Technology



Wintec

WAIKATO INSTITUTE OF TECHNOLOGY

Te Kuratini o Waikato

Ki te whakakaha i te iwi mā te ara mātauranga, te rangahau umanga whanakenga hoki

Mobile Learning Engine: MLE

MyMLE - End Users For private persons

MyMLE is for everyone, who wants to use mobile learning for himself. It allows you to create your **own mobile learning content** and to pack it to a mobile phone application, which you can use on your phone.

ENTER



MyMLE is a stand-alone PC application (for Windows and Linux) which is easy to use. The mobile phone application it creates runs on nearly every mobile phone.

MLE-Moodle - End Users For institutions/companies

An **out-of-the-box mobile Learning** system. Which contains everything you need to build a mLearning system. Easy to install and easy to use.

To use MLE-Moodle you need a web-server!

ENTER



MLE-Moodle is a plugin for **Moodle**, which adds mLearning functionality to this open-source eLearning system. The mobile learning area can be accessed with the mobile **phone browser** or with a special mobile **phone application**, which is designed for mobile Learning.

MLE mobile application framework - Developers

The mobile phone learning-application offers a very powerful **mobile application framework** for your own mobile projects. Extending the MLE is very easy due to a plugin-system.

For **developers only!**

ENTER

<http://mle.sourceforge.net/>



Moodle by iPhone/iPod touch



<http://mobile.elearning.ac.nz/>

Ki te whakakaha i te iwi mā te ara mātauranga, te rangahau umanga whanakenga hoki

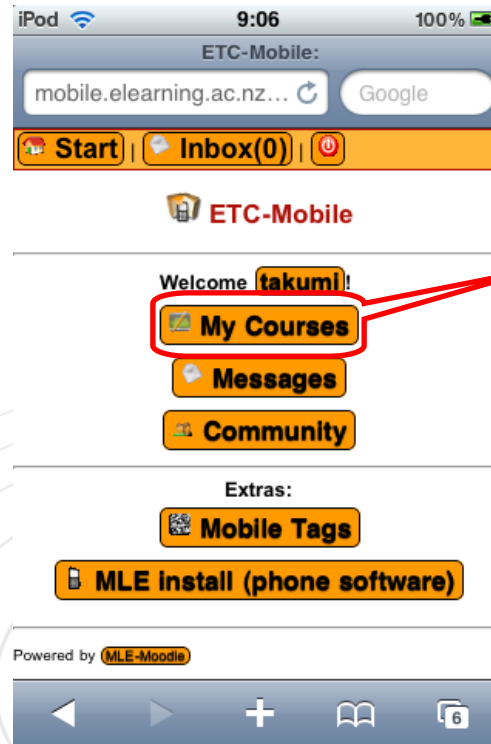
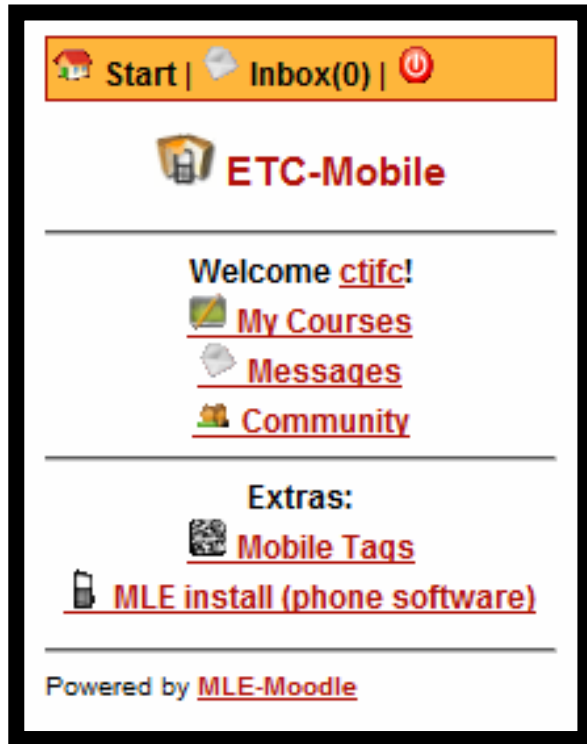


Wintec

WAIKATO INSTITUTE OF TECHNOLOGY

Te Kuratini o Waikato

CSS for iPhone/iPod touch

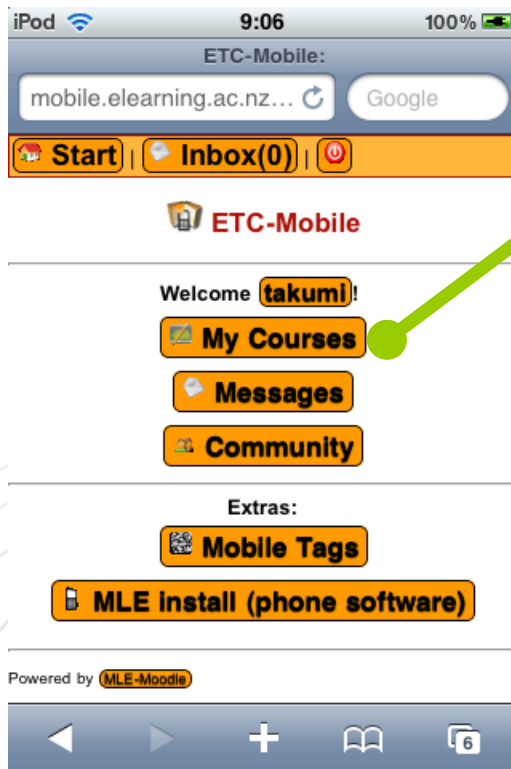


MLE-Moodle CSS Files:
style-std.css
style-big.css
style-iphone.css
style-touchscreen.css

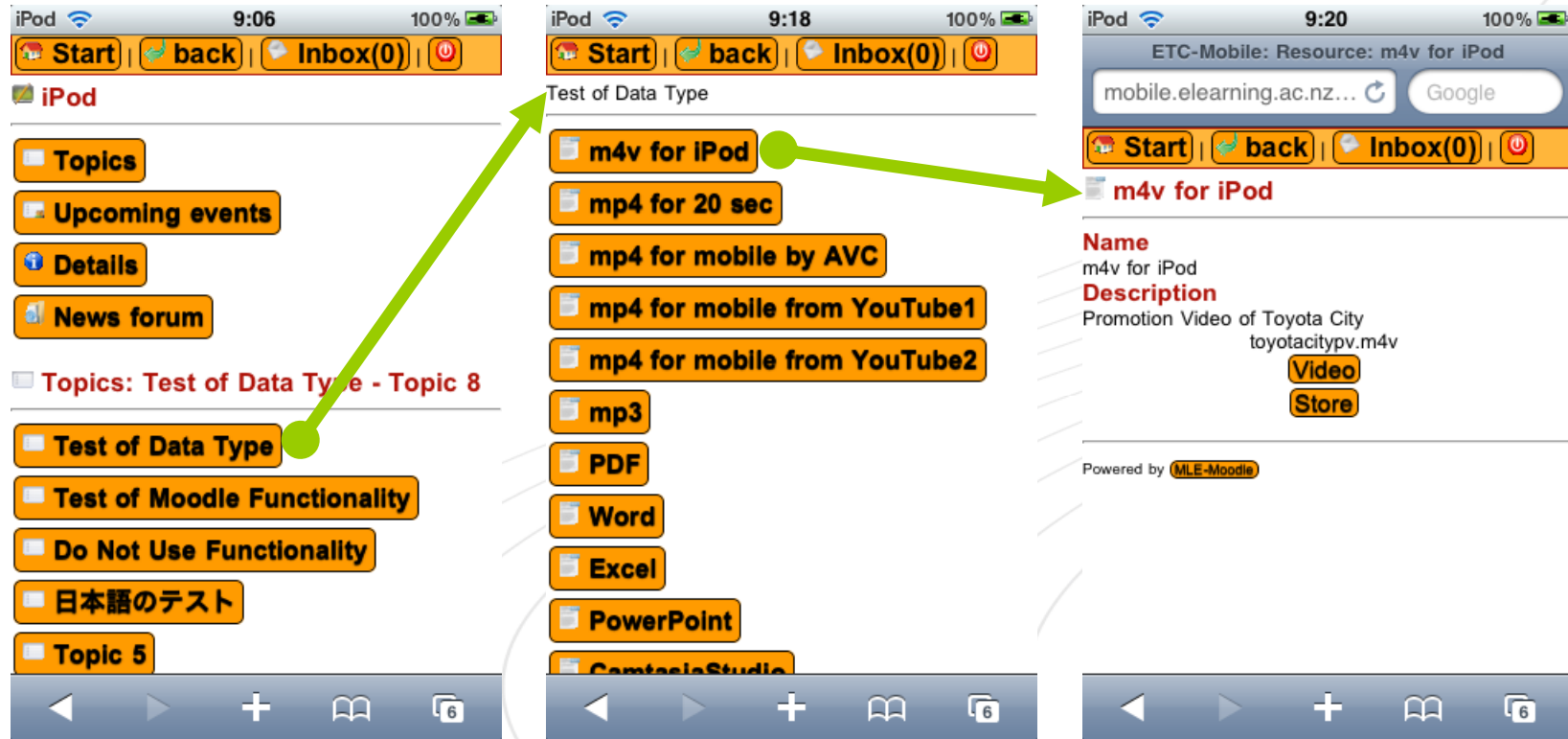
<http://mobile.elearning.ac.nz/blocks/mle/browser.php>



Interface



Course



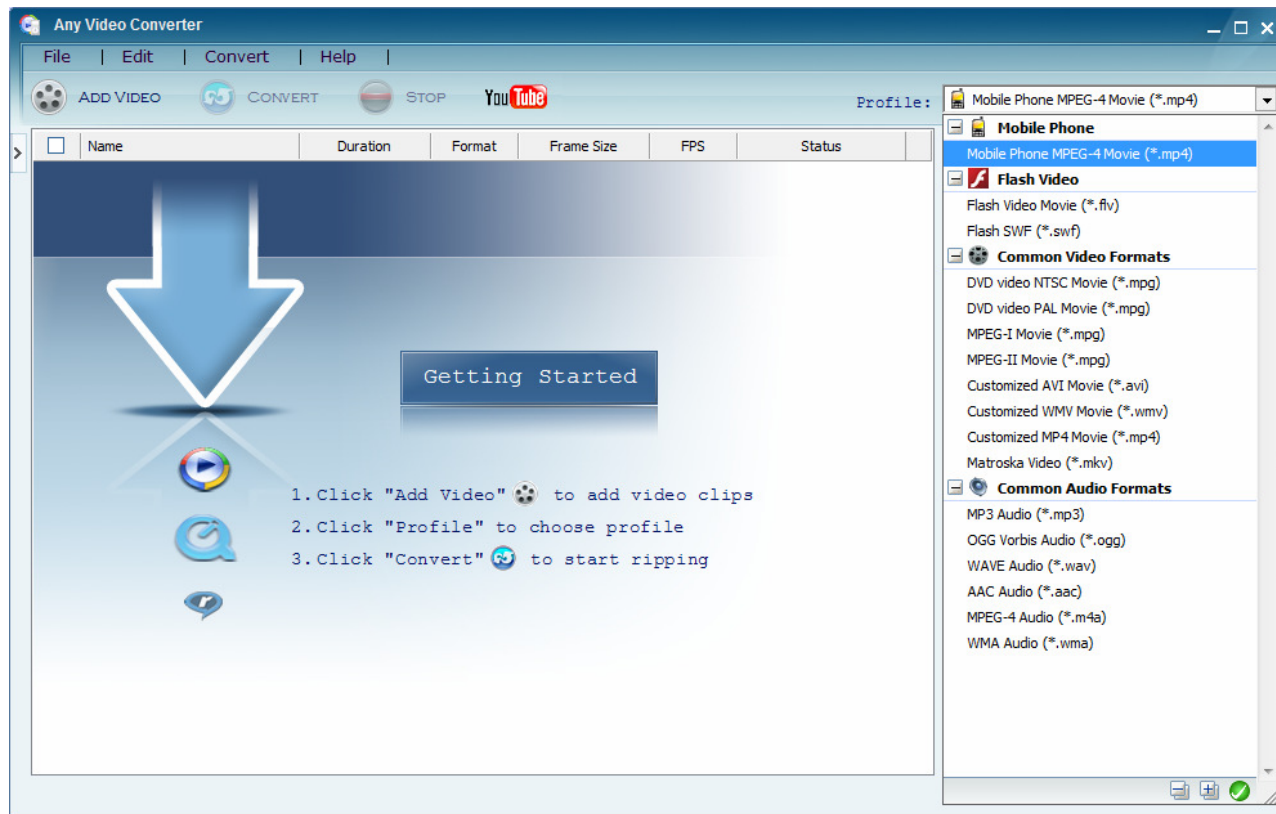
Wintec

WAIKATO INSTITUTE OF TECHNOLOGY

Te Kuratini o Waikato

Ki te whakakaha i te iwi mā te ara mātauranga, te rangahau umanga whanakenga hoki

Video Converter from YouTube



<http://any-video-converter.com/>

Ki te whakakaha i te iwi mā te ara mātauranga, te rangahau umanga whanakenga hoki



Wintec

WAIKATO INSTITUTE OF TECHNOLOGY

Te Kuratini o Waikato

Video

Test of Data Type



m4v for iPod



mp4 for 20 sec



mp4 for mobile by AVC



mp4 for mobile from YouTube1



mp4 for mobile from YouTube2



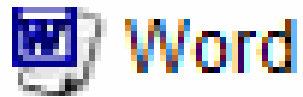
mp3



Applications



PDF



Word



Excel



PowerPoint



CamtasiaStudio



Wintec

WAIKATO INSTITUTE OF TECHNOLOGY

Te Kuratini o Waikato

Moodle Functionality


Test of Moodle Functionality

 Assignment

 Choice

 Forum

 Quiz

 Wiki

Flashcard-Trainer



Moodle Issues

Do Not Use Functionality



Chat



Hot Potatoes



Questionnaire

Extend and Customize MLE module in future



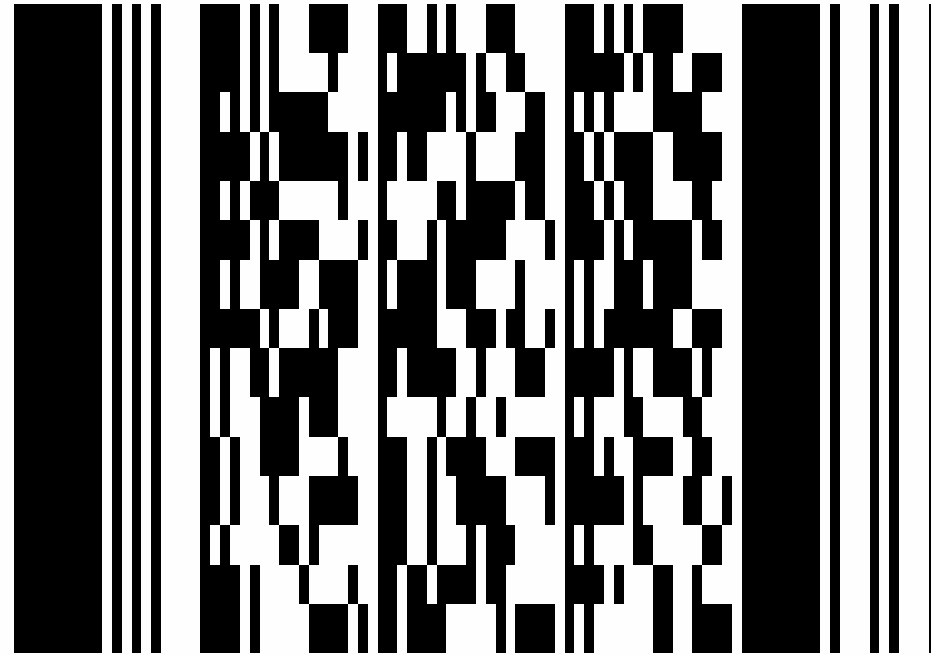
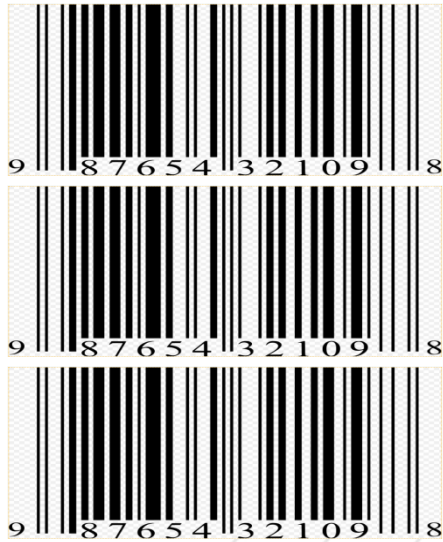
Bar Codes



Scanned Horizontally



Stacked



Scanned Horizontally: One Dimensional



Wintec

WAIKATO INSTITUTE OF TECHNOLOGY

Te Kuratini o Waikato

Ki te whakakaha i te iwi mā te ara mātauranga, te rangahau umanga whanakenga hoki

QR Code: Wintec

DATA

Scanned vertically



Scanned Horizontally

DATA

Two Dimensions 2D

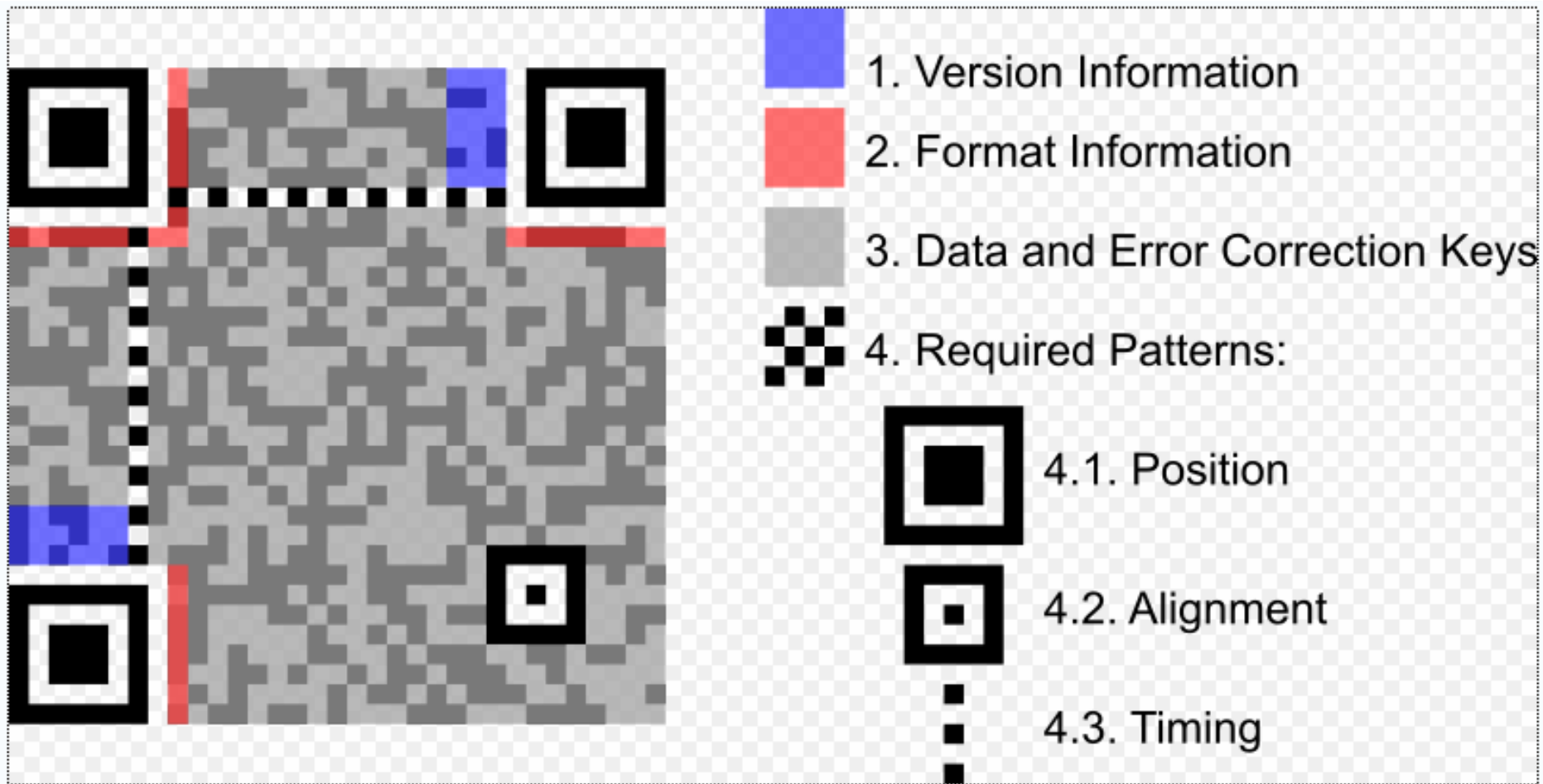
Kiwi whakarewhakarewha te mahi haka o te tangahau umanga whanakenga hoki



wintec

WAIKATO INSTITUTE OF TECHNOLOGY

Te Kuratini o Waikato



Author Richard Wheeler (Zephyris). Original uploader was Zephyris at [en.wikipedia](#)

Permission Licensed under the [GFDL](#) by the author; GFDL-SELF-NO-DISCLAIMERS; Released under the [GNU Free Documentation License](#).
(Reusing this image)



te iwi mā te ara mātauranga, te rangahau umanga whanakenga hoki



Wintec

WAIKATO INSTITUTE OF TECHNOLOGY

Te Kuratini o Waikato

Accomplishment

Assess

Enabled

Connections generated by codes are reliable and robust.



Infrastructure facilitates the transfer of information between disparate information platforms and systems to mobile devices.

Context

Action

Assess

Engaged

Learners have open access to interactive content at any time from anywhere.



Learners have ready access to the contextualised content they need when they need it.

Content

Action

Assess

Empowered

Participants are competent, confident and capable of using QR/MT.



Ongoing support in QR/MT learning applications provided to learners and tutors.

Capability

Action

Awareness