

The A.C.E Framework

Dr John Clayton



Wintec

WAIKATO INSTITUTE OF TECHNOLOGY

Te Kuratini o Waikato

DON'T WORRY. TECHNOLOGY
WILL SAVE YOU.



MUELLER

Capability

- *Effective*: impact on learning/training in the manner they were designed to do,
- *Efficient*: are cost effective in terms of “return of investment” on the resources consumed (i.e. time spent individuals engaging with the activity and time spent developing the activity)
- *Replicable*: others (institutions/individuals can duplicate events and obtain the similar results



Wintec
WAIKATO INSTITUTE OF TECHNOLOGY
Te Kuratini o Waikato

Accomplishment

Action

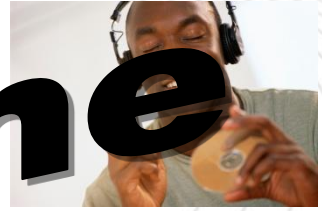
Awareness

The 3 As

- **Awareness:** Leadership reflects upon existing capacity, capability and use of ICT.
- **Action:** Policies and plans are generated to increase access, capacity and capability at a systemic level.
- **Accomplishment:** The impact of implementations are evaluated for effectiveness.



Wintec
WAIKATO INSTITUTE OF TECHNOLOGY
Te Kuratini o Waikato



Web-Enhanced

Online

Open & Networked



Web-Supported



Flexible Web-Enabled



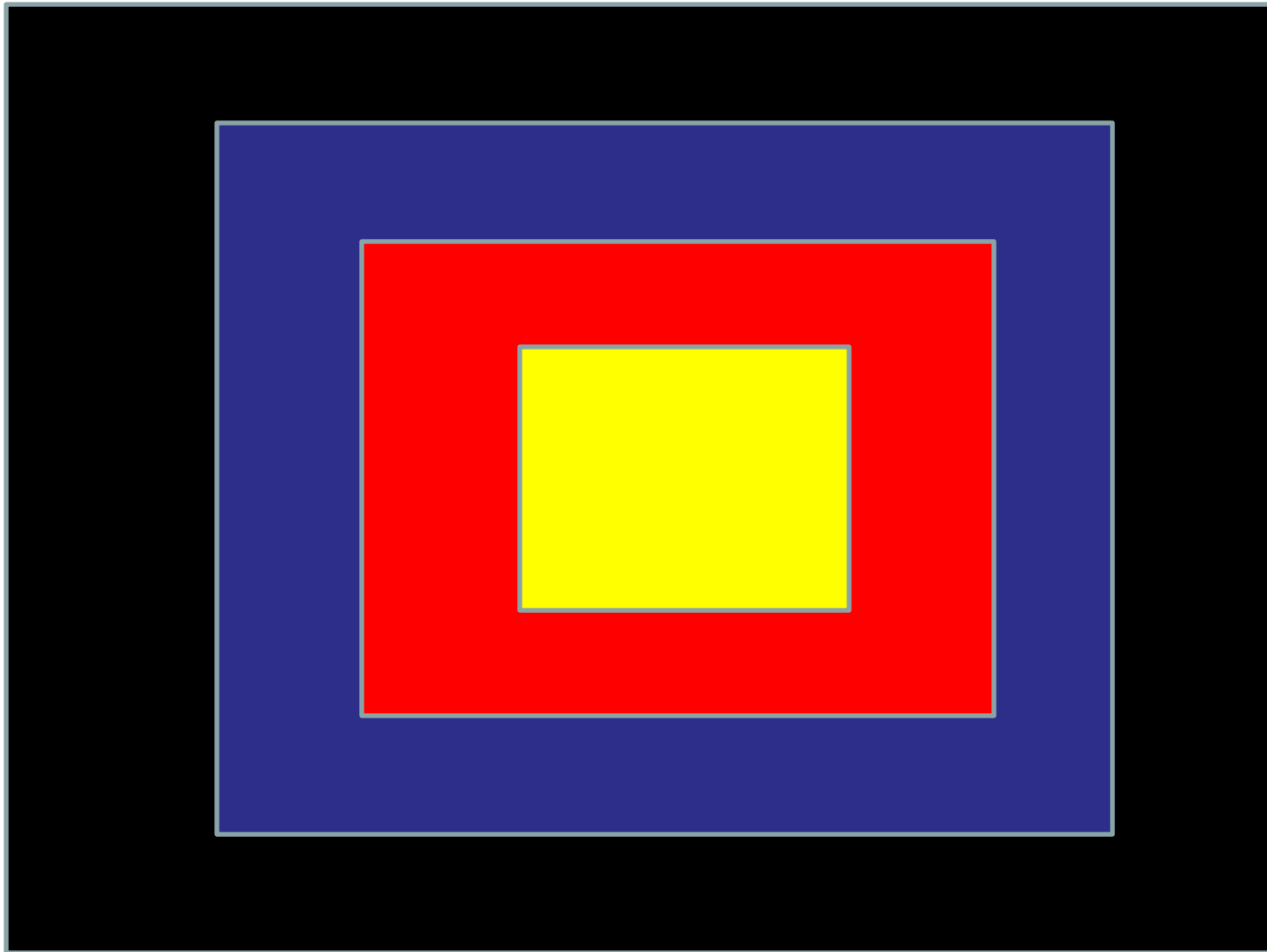
Computer Assisted



Ki te whakakaha i te iwi mā te ara mātauranga, te rangahau umanga whanakenga hoki

NOLOGY

How many colours



Ki te whakakaha i te iwi mā te ara mātauranga, te rangahau umanga whanakenga hoki



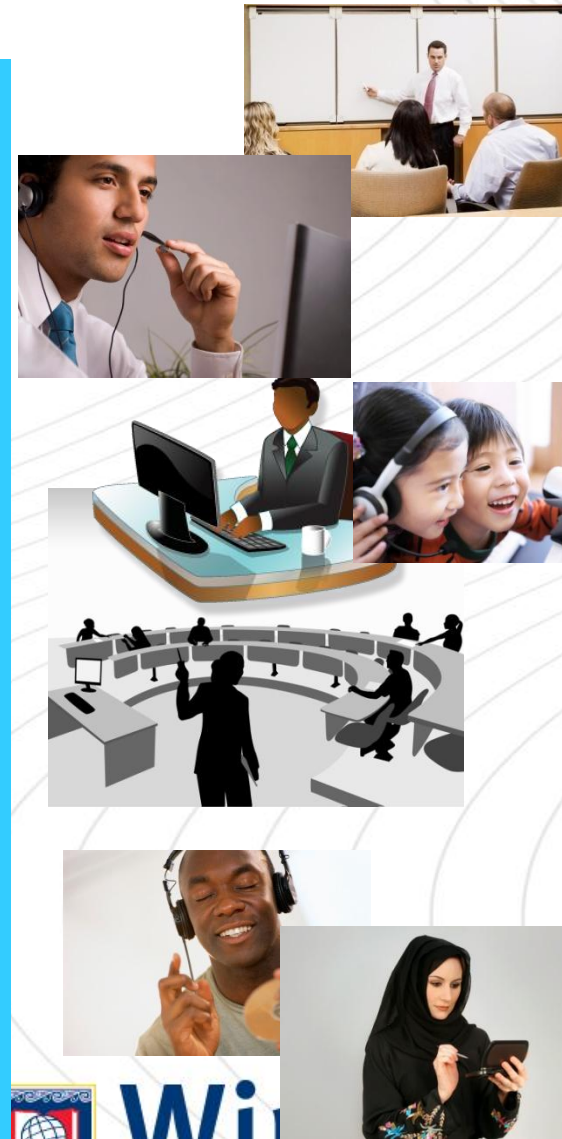
WAIKATO INSTITUTE OF TECHNOLOGY
Te Kuratini o Waikato



Context



Content



3 Cs

- **Context:** Infrastructural/technical factors shape and influence participant perceptions of ICT-enabled environments.
- **Content:** National factors emphasise the 'uniqueness' of individual institutions and shape the direction and focus of ICT-based implementations.
- **Capability:** Individual factors building the competence, confidence and understanding of individuals and determine the successful integration of ICT in institutions.



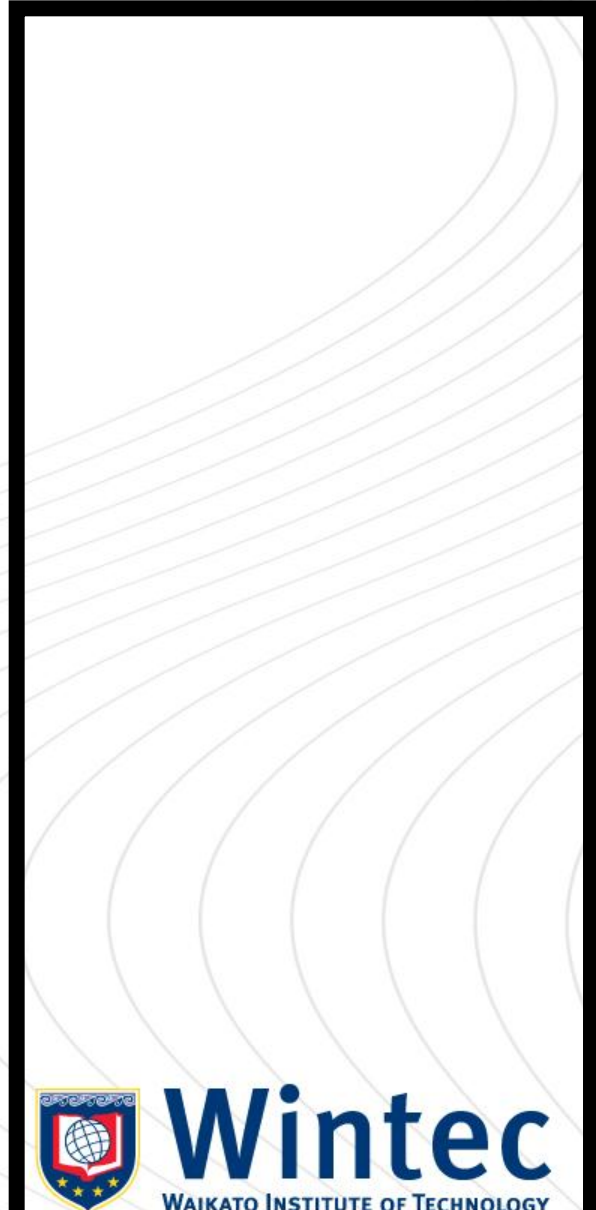
Wintec
WAIKATO INSTITUTE OF TECHNOLOGY
Te Kuratini o Waikato



Context



Content



Capability

3 Es

- **Enabled:** Initiatives measured on how they have enabled users to participate in ICT enhanced environments.
- **Engaged:** Initiatives can be measured on how they have initiated and maintained engagement in the ICT communities established.
- **Empowered:** Initiatives can be measured on how they have ensured all participants are capable of participation.



Wintec
WAIKATO INSTITUTE OF TECHNOLOGY
Te Kuratini o Waikato

Enable

Engage

Empower

Ki te whakakaha i te iwi mā te ara hātauranga, te rangahau umanga whanakenga hoki



Wintec
WAIKATO INSTITUTE OF TECHNOLOGY
Te Kuratini o Waikato

The A.C.E Model

ICT Accomplishment (Measure)

Assess

Enabled

Connections are reliable and robust.

Access policies are designed to facilitate delivery of ICT facilitated teaching and learning events.

Purchase of peripheral devices and software are aligned with school policies and procedures

Context

Assess

Engaged

Learners are actively engaged with course resources deployed.

Digital learning objects are indexed, stored, retrieved and presented

Participants have access to course materials they need, when they need them

Content

Assess

Empowered

Teachers are provided with professional development in ICT enabling them to participate fully in ICT environments.

Learners provided with ongoing support enabling them to participate fully in ICT environments

Capability

Action

Action

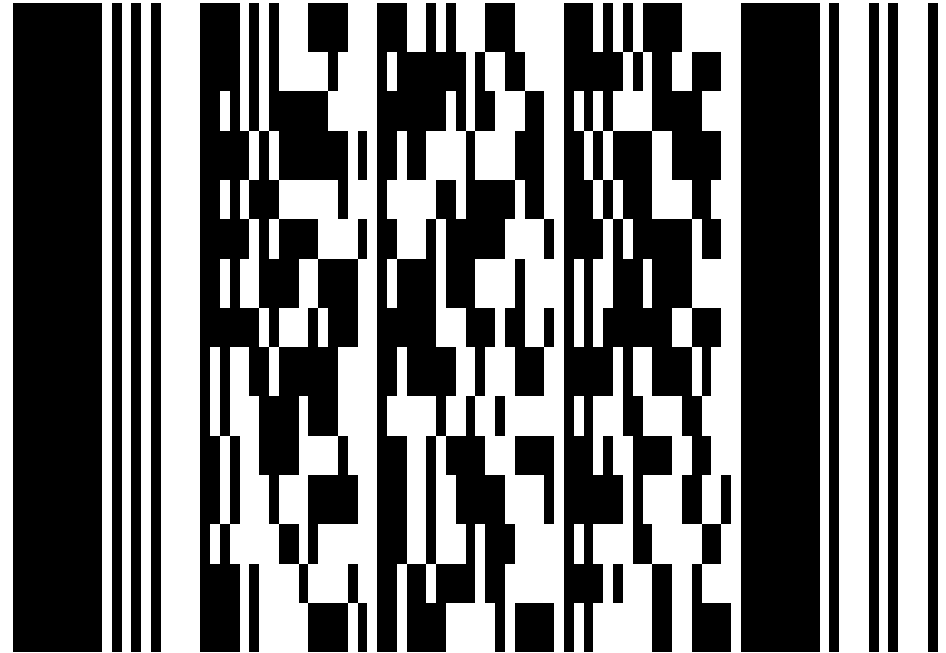
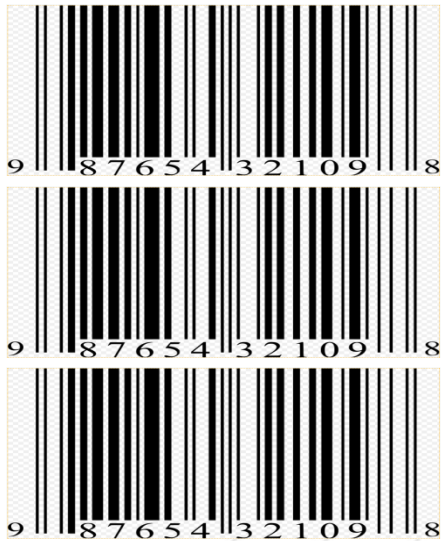
Action

ICT Awareness (Plan)

One Dimensional



Stacked



Wintec

WAIKATO INSTITUTE OF TECHNOLOGY

Te Kuratini o Waikato

Ki te whakakaha i te iwi mā te ara mātauranga, te rangahau umanga whanakenga hoki

Two Dimensional

- QR code is presented in both the vertical and horizontal dimension (direction)

QR Code: Wintec

DATA



DATA

intec
INSTITUTE OF TECHNOLOGY
Kuratini o Waikato

Accomplishment

Assess

Enabled

Connections generated by codes are reliable and robust.



Infrastructure facilitates the transfer of information between disparate information platforms and systems to mobile devices.

Context

Action

Awareness

Mobile Learning Engine: MLE

MyMLE - End Users For private persons

MyMLE is for everyone, who wants to use mobile learning for himself. It allows you to create your **own mobile learning content** and to pack it to a mobile phone application, which you can use on your phone.

ENTER



MyMLE is a stand-alone PC application (for Windows and Linux) which is easy to use. The mobile phone application it creates runs on nearly every mobile phone.

MLE-Moodle - End Users For institutions/companies

An **out-of-the-box mobile Learning** system. Which contains everything you need to build a mLearning system. Easy to install and easy to use.

To use MLE-Moodle you need a web-server!

ENTER



MLE-Moodle is a plugin for **Moodle**, which adds mLearning functionality to this open-source eLearning system. The mobile learning area can be accessed with the mobile **phone browser** or with a special mobile **phone application**, which is designed for mobile Learning.

MLE mobile application framework - Developers

The mobile phone learning-application offers a very powerful **mobile application framework** for your own mobile projects. Extending the MLE is very easy due to a plugin-system.

For developers only!

ENTER



Wintec

WAIKATO INSTITUTE OF TECHNOLOGY

Te Kuratini o Waikato

Accomplishment

Assess

Engaged

Learners have open access to interactive content at any time from anywhere.



Learners have ready access to the contextualised content they need when they need it.

Content

Action

Awareness

“Scapes”

My Maps



Create personalised, annotated, customized maps using Google Maps.

Your maps can contain the following:

- Placemarks
- Lines
- Shapes

Once you have created a map, you can:

- Add descriptive text, including rich text and HTML
- Embed photos and videos in your map
- [Share your maps with others](#)

To create or edit maps, you must be signed in to your Google Account. If you do not have an account, [create one now](#).

Creating a Map

Creating a map is easy. Here are the basic steps:

1. Click **My Maps**
2. Click **Create new map**.
3. Add a title and description for your map.
4. Decide whether the map should be **public** or **unlisted**. Public maps are automatically included in Google Maps search.
5. Use the icons in the top left corner of the map. These include:



Selection tool. Use this to drag the map and select placemarks, lines and shapes.



Placemark tool. Use this to add placemarks.



Line tool. Use this to draw lines.



Shape tool. Use this to draw shapes.

You can return to your map at any time. Just go to Google Maps and click **My Maps**. Sign in to your Google Account and select the map from your list of maps.

Accomplishment

Assess

Empowered

Participants are competent, confident and capable of using QR/MT.



Ongoing support in QR/MT learning applications provided to learners and tutors.

Capability

Action

Awareness

Australian Flexible Learning Framework news

Framework to help build e-learning momentum in Asia

E-learning integral for trades training

VET E-portfolios Showcase - call for presenters

e-Gems webconference - Second Life, scenarios, Sloodle and an outbush community

Toolbox strengthens awareness of Indigenous culture

eLearning Watch

eLearningWatch December 2009

eLearningWatch November 2009

eLearningWatch Oct2009

eLearningwatch Sept2009

eLearningWatch August 2009

Going Mobile

The Emerging Technologies Centre has included a functionality, "Mobile Learning Engine", to this site. This functionality allows participants to engage with moodle courses from their phones. A QR code to access ETC - Mobile is provided below.



ETC Moodle Link: <http://etc.elearning.ac.nz/>

ETC Manager: Dr John Clayton

Course categories

e-Learning & Industry
Demonstrator Space

All courses ...

Login

Username

Password

Login

Lost password?

Scoop NZ - Education

Polytechnic purchases international colleges

Teachers Ramp Up School League Table Debate

Kindergarten still in demand

Kids Planet Childcare Open Day - Albany

NCEA Results In The Post



Accomplishment

Assess

Enabled

Connections generated by codes are reliable and robust.



Infrastructure facilitates the transfer of information between disparate information platforms and systems to mobile devices.

Context

Action

Assess

Engaged

Learners have open access to interactive content at any time from anywhere.



Learners have ready access to the contextualised content they need when they need it.

Content

Action

Assess

Empowered

Participants are competent, confident and capable of using QR/MT.



Ongoing support in QR/MT learning applications provided to learners and tutors.

Capability

Action

Awareness