

ICT in Education: Some examples from the Waikato Institute of Technology.

A Presentation at Matsue Institute of Technology

Dr John F. Clayton

Kia ora!

Hello



NEW ZEALAND



Waikato River



Gardens





Wintec

WAIKATO INSTITUTE OF TECHNOLOGY

Te Kuratini o Waikato



**Emerging
Technologies Centre**

Te Taiwhanga Hangarau Mohou

Milk



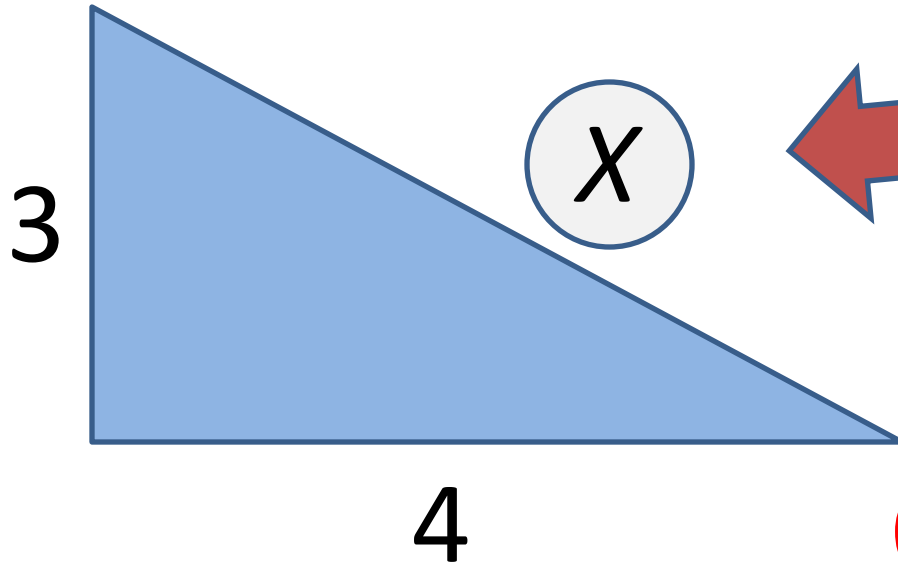


Rugby



Ngaruawahia





Solution 1

Question: Find X

Solution 2

$$X^2 = 3^2 + 4^2$$

Maths

- Think of a number between 2 and 8
- Multiply that number by 9
- You now have a two digit number.
- Add those two digits together
- Take away 5

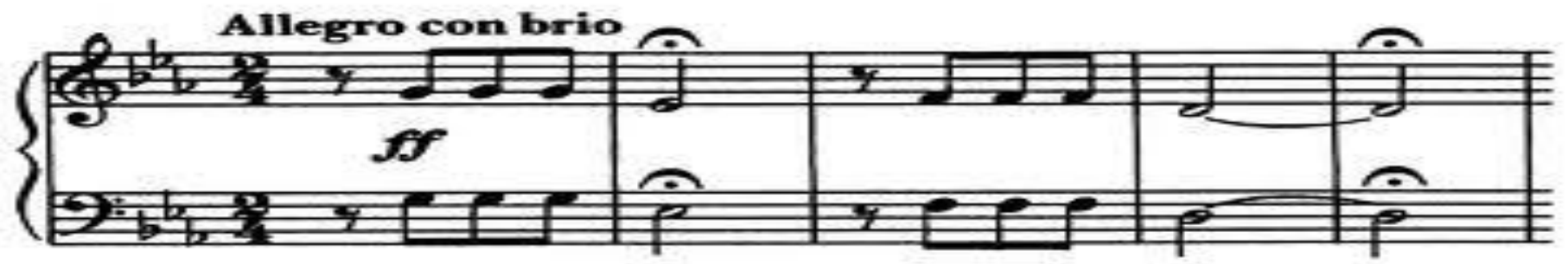
English Language Learning

Now think of the English alphabet and your number

- If $A = 1$, $B = 2$ and so on till $Z = 26$. Your number will correspond with a letter.
- Think of a **Northern European country** that starts with that letter.
- Now think of the NEXT letter in the alphabet.
- Think of an **African Mammal** that starts with that letter.

Elephants in Denmark?





Interpretation is influenced by our cultural “instruments”

Investments in ICT

To enable learners to participate successfully in the “**21st century knowledge age**” New Zealand educational institutions have made significant investments in ICT infrastructure, hardware, software and Professional Development (PD).

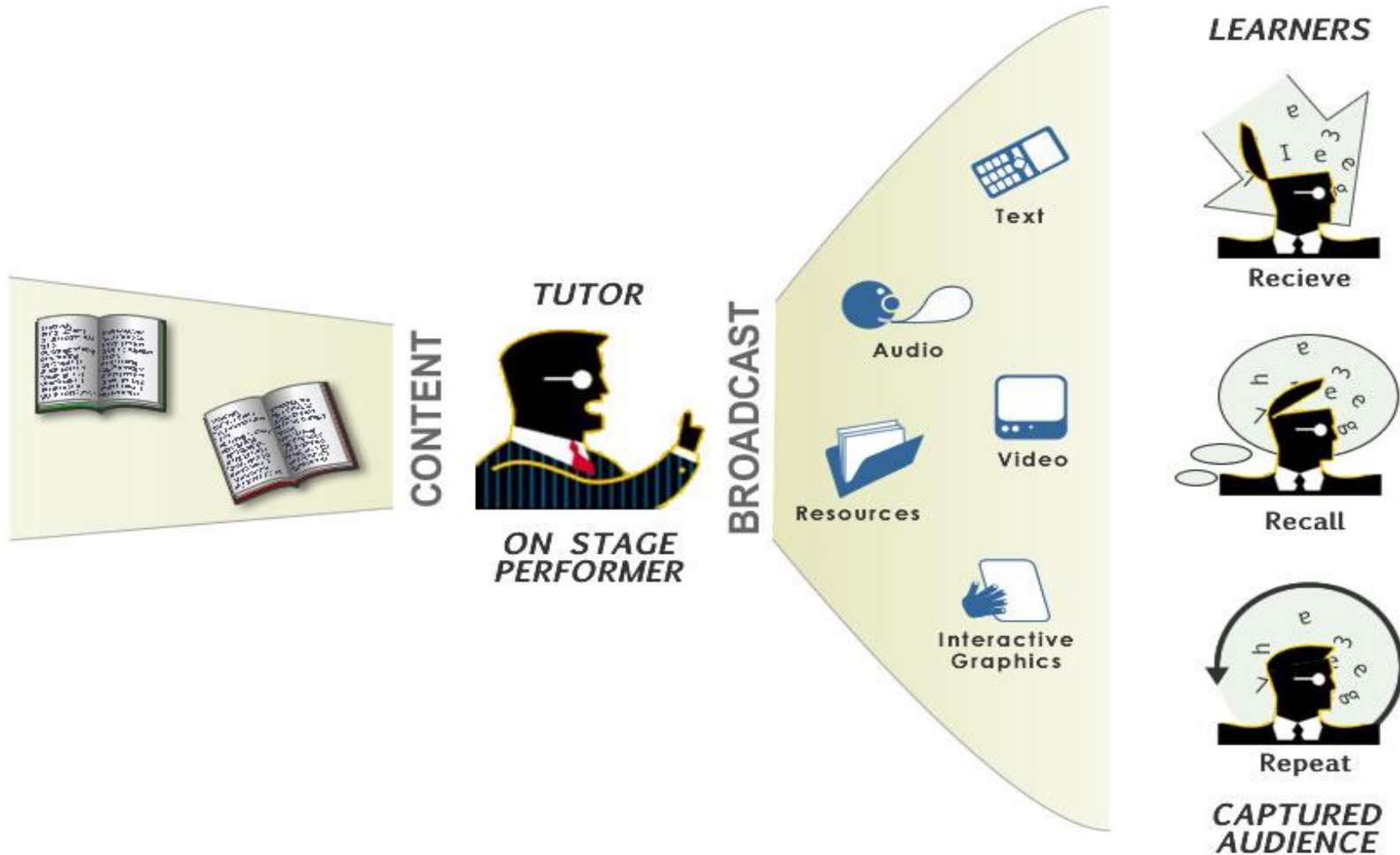


Blackboard and Slate

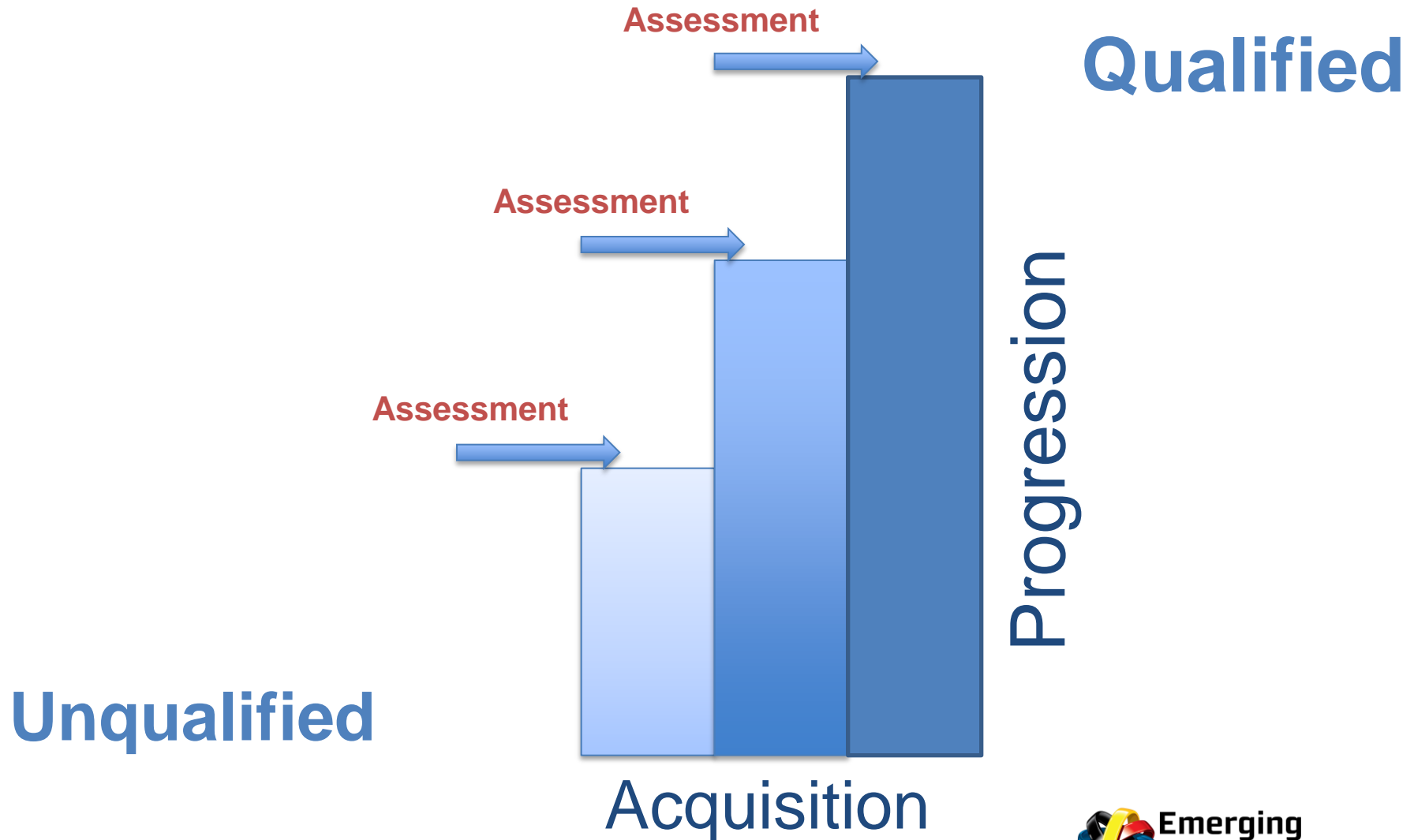


Data-show and Laptop

Traditional Model



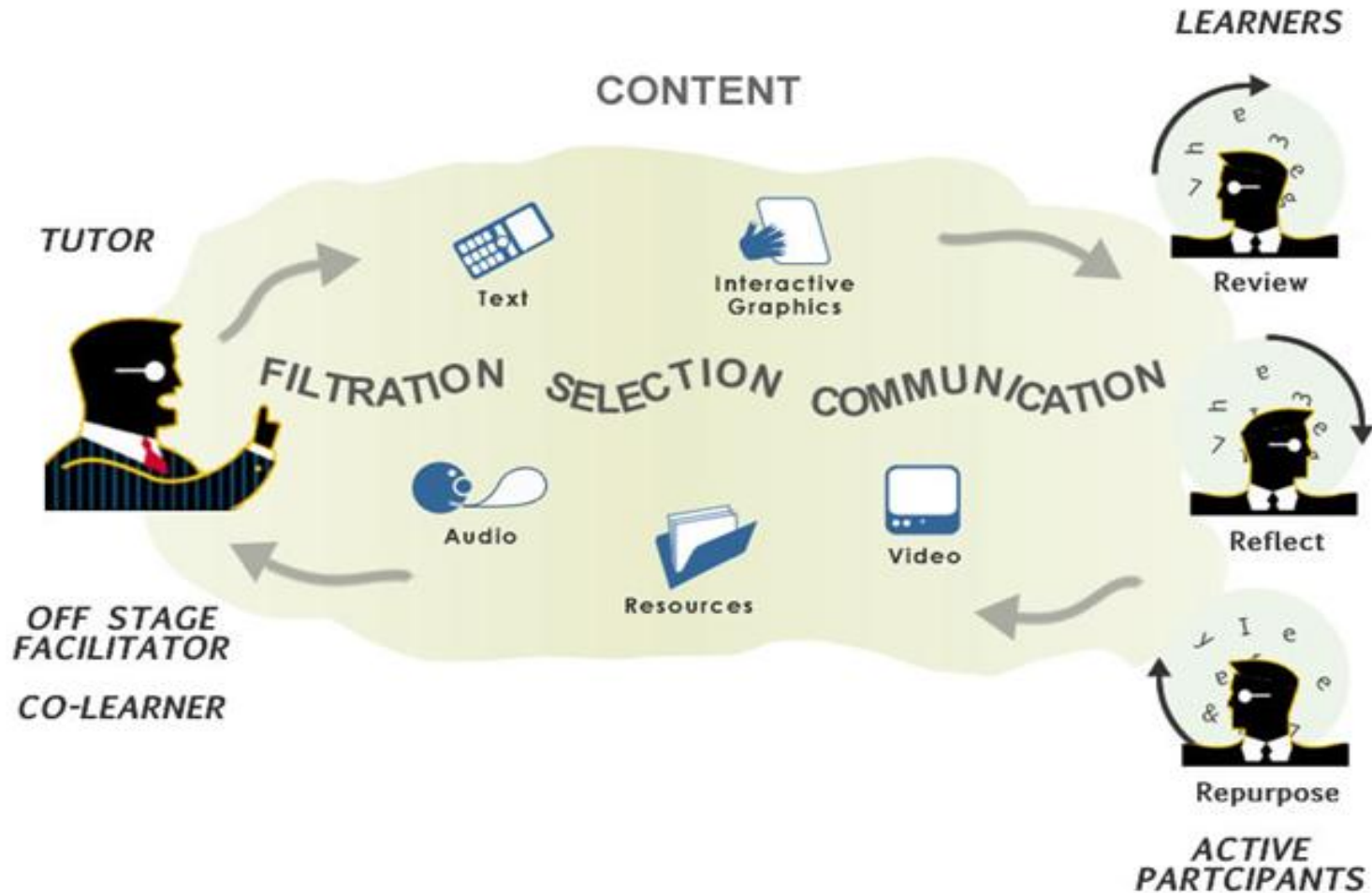
Curriculum as Product



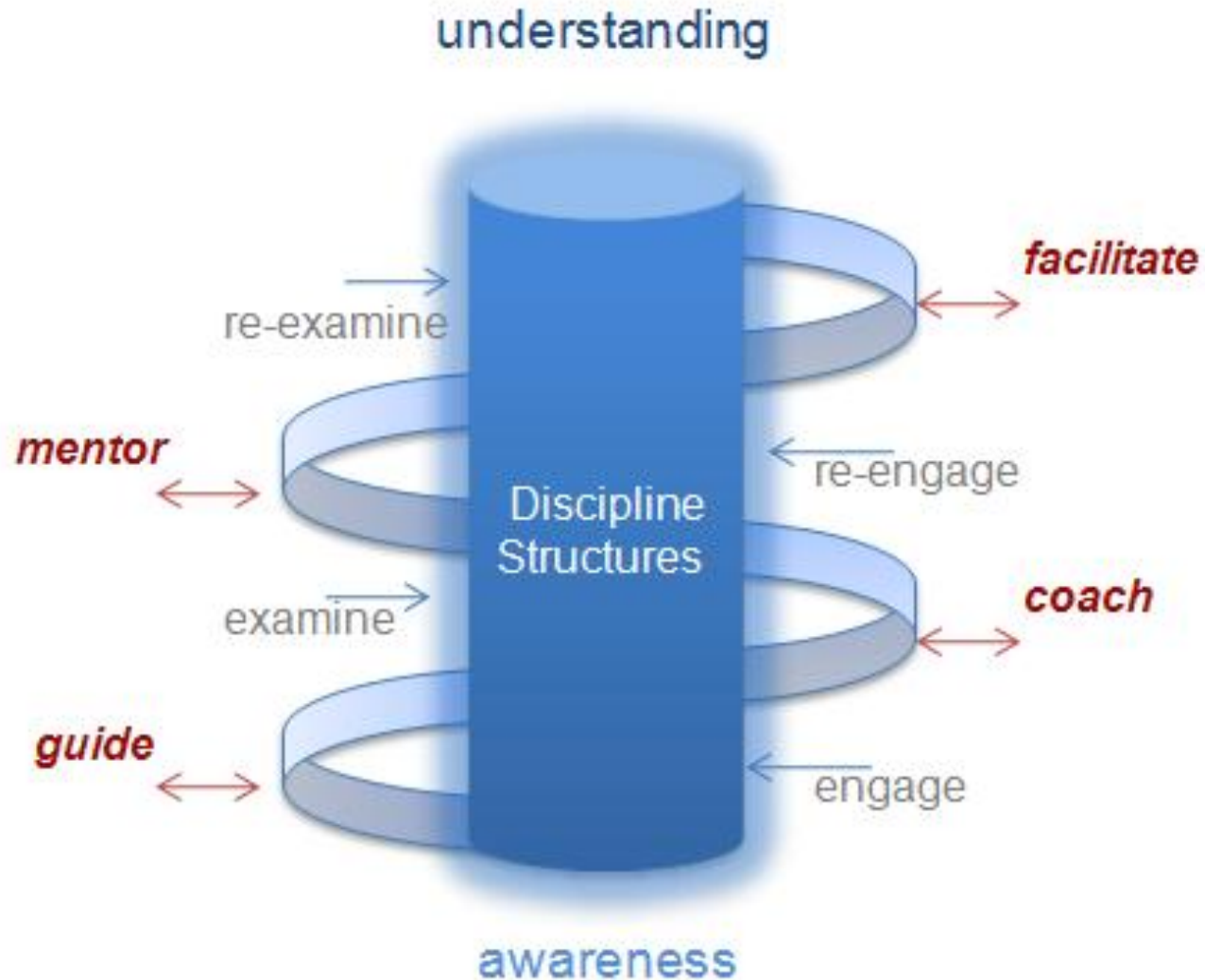




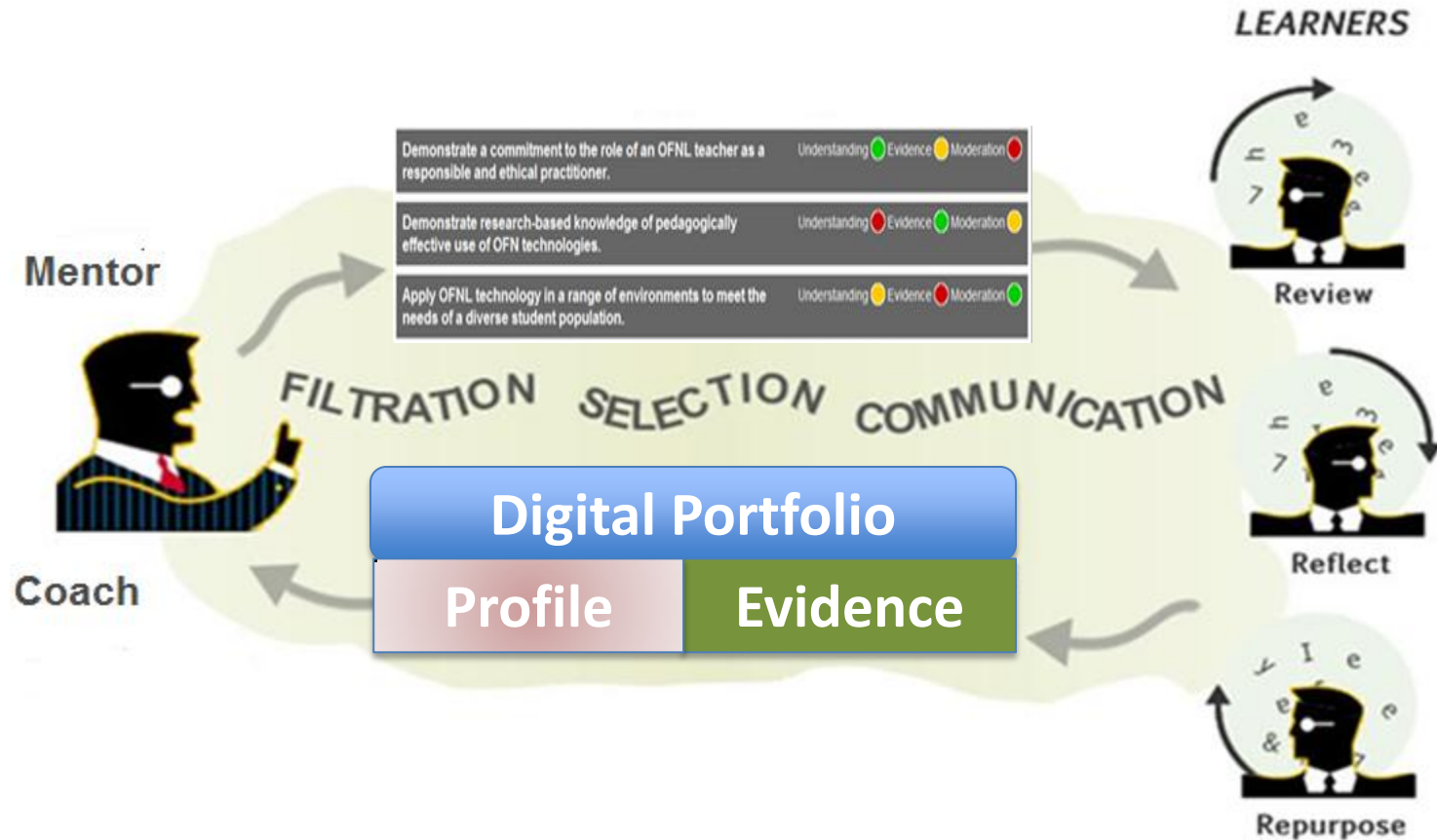
Empowerment Model



Curriculum as Process



Mentor Overview



Dairy Industry

Welcome



Body Condition Scoring (BCS) in New Zealand

This review site is a release to stakeholders to review firstly, the performance of the video players being tested and secondly, the display and reporting functions of Moodle.

NB: The questions used are INDICATIVE AND ARE NOT VALID.

YouTube

Design Note 1: This quiz uses YouTube playlists. The presentation to candidates will be the same on all devices and through all browsers. To manipulate the video candidates use the YouTube controls. (NB: In general viewing is one directional).



Kaltura

Design Note 2: This quiz uses a Moodle integrated Kaltura server and the presentation to candidates will be the same on all devices and through all browsers. To manipulate the video candidates use the Kaltura controls. (NB: Viewing is one directional).



Moodle /QuickTime

Design Note 3: This quiz uses Moodle to present the videos. To ensure there is a consistency in viewing it is recommended candidates use the QuickTime plugin to play the videos. To install the QuickTime player select the browser you are using below and follow the instructions.

Chrome Firefox Internet Explorer

QuickTime Basic Navigation

Engineers

[Home](#) → [Courses](#) → [Chevron](#) → [Chevron CD](#)

Welcome

[Current Capabilities](#)

[Planning Capability Development](#)

Welcome



This web-space has been established to enable the review the current capabilities of Chevron engineering staff and align these capabilities with and future development needs of the organisation and the individual.

The aim of the site is to build and uphold a transparent set of standards for engineers employed by Chevron Indonesia. This will provide both employees and managers with a framework to reflect on current performance and to plan for continuous professional development and career planning.

Micro-Credentials



**Nutrient Management
Adviser Certification
Programme Ltd**



Welcome to NMACP Certification site

The Nutrient Management Adviser Certification Programme defines the standards for people to meet to provide certified nutrient management advice to clients.

This certification site has been established to enable nutrient management advisers in New Zealand to complete the requirements of the nutrient management certification process. To access the secured site please use the link, [NMACP Certification](#), provided on the right.

If you require further details contact the NMACP administrator at info@nmacertification.org.nz.

Health Sector

Administration

Home → Courses → Japan: English Language Learning → Exabis

Turn editing on

Portfolio Topic 1

Portfolio

This area uses Exabis Portfolio and Competencies Blocks to create a space for learners to demonstrate their competencies.

The New Zealand registered nursing competencies have been used as a guide.

Topic 1 ▶

EXABIS COMPETENCIES

- module configuration
- subjects & topics
- assign Moodle activities
- overview of competencies
- detailed view of competencies
- examples and tasks

EXABIS E-PORTFOLIO

- My Portfolio
- Shared Portfolios
- Export SCORM-File

Haere rā

Goodbye